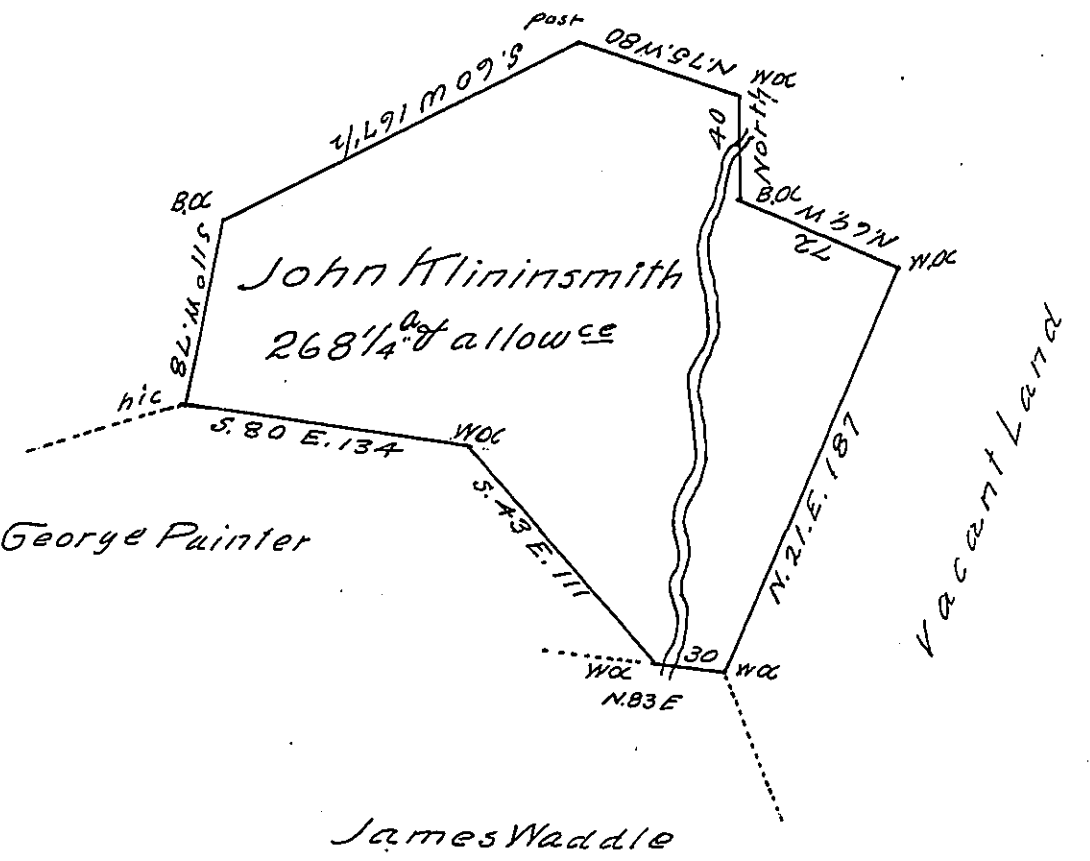


Christopher Herold



Survey'd to John Klinin Smith on the first day of February 1786  
 The above described Tract of Two hundred & sixty eight acres  
 & a quarter of an acre & allowance of six p Cent. Situate on the  
 waters of Blacklick Creek, adjoining land of Christopher  
 Herold & George Painter Including an Improvement in  
 Westmorland County By warrant of the 26<sup>th</sup> Oct: 1785  
 Joshua Elder D.S.

John Lukens Esq<sup>r</sup> S. Gen<sup>l</sup>

IN TESTIMONY that the above is a copy of the original remaining on file in  
 the Department of Internal Affairs of Pennsylvania, made  
 conformably to an Act of Assembly approved the 16th day of  
 February, 1833, I have hereunto set my Hand and caused  
 the Seal of said Department to be affixed at Harrisburg,  
 this thirty-first day of July 1905  
 Isaac R. Brown  
 Secretary of Internal Affairs.